



GMT MONTHLY MEMBERSHIP PROGRESS REPORT

Results as of: 6/30/2020

Multiple District 3231

LOCATION: INDIA

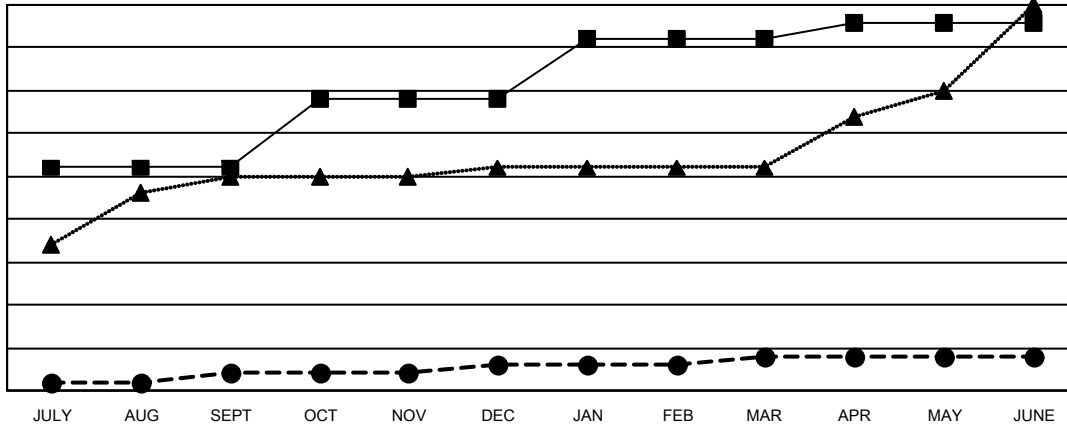
GMT: OPEN

GMT CA 6

| Clubs | | | |
|-----------------------|---------------|-----------|---------------|
| RESULTS FOR 2019-2020 | | | |
| QUARTER | NEW CLUB GOAL | NEW CLUBS | DROPPED CLUBS |
| JULY/AUG/SEPT | 26 | 2 | 2 |
| OCT/NOV/DEC | 8 | 1 | 26 |
| JAN/FEB/MAR | 7 | 1 | 7 |
| APR/MAY/JUNE | 2 | 0 | 4 |

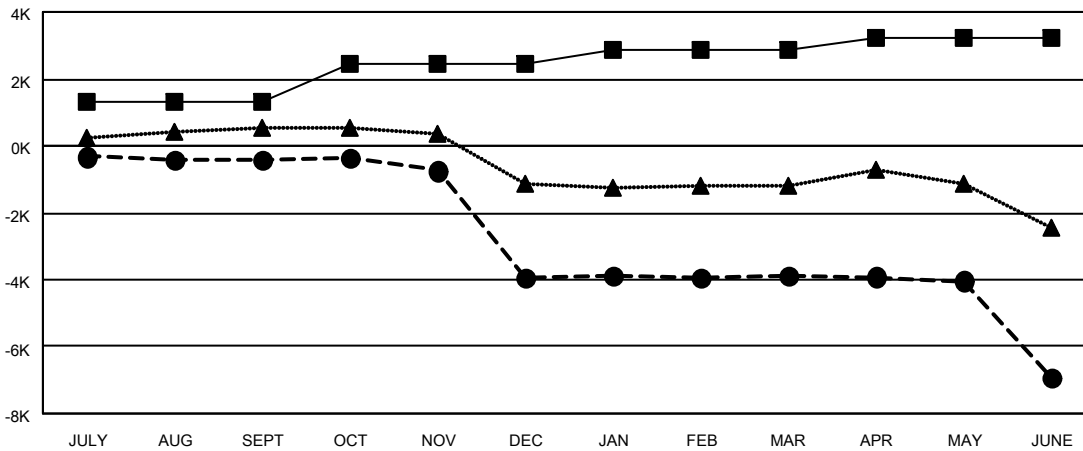
| Members | | | |
|-----------------------|------------------------|----------------------|--|
| RESULTS FOR 2019-2020 | | | |
| QUARTER | MEMBER GROWTH NET GOAL | MEMBER GROWTH ACTUAL | DROPPED MEMBERS ACTUAL (including transfers) |
| JULY/AUG/SEPT | 1325 | 770 | 1,045 |
| OCT/NOV/DEC | 1125 | 296 | 3,836 |
| JAN/FEB/MAR | 425 | 453 | 267 |
| APR/MAY/JUNE | 325 | 285 | 3,252 |

GOALS AND ACTUAL NEW CLUBS CUMULATIVE



- - CURRENT YEAR GOALS FOR NEW CLUBS
- - CURRENT YEAR ACTUAL NEW CLUBS
- ▲ - LAST YEAR ACTUAL NEW CLUBS

GOALS AND ACTUAL MEMBERS CUMULATIVE



- - MEMBER GROWTH NET GOAL
- - MEMBER GROWTH ACTUAL
- ▲ - LAST YEAR MEMBERSHIP ACTUAL

| | | |
|------------------------|---|--|
| DROPPED CLUBS: 39 | 363 CLUBS OF 699 ADDED 1 OR MORE NEW MEMBERS | GENDER DISTRIBUTION |
| | | MALE 21,003 (65.05%) |
| | | FEMALE 11,285 (34.95%) |
| DROPPED MEMBERS | CLICK HERE FOR CUMULATIVE MEMBERSHIP DATA | TOTAL FAMILY UNIT MEMBERS 22,166 |
| DECEASED 198 | | FAMILY MEMBERS PAYING HALF DUES 13,714 |
| CLUB CANCELLED 1,275 | | |
| OTHER 6,930 | | |
| TOTAL 8,403 | | |